

Cutler Avenue Pedestrian Improvements



08/16/2021

Welcome and Introductions



Agenda



- 01** Project Description
- 02** Project Layout – Plan View
- 03** Project Typical Section
- 04** Questions/Comments



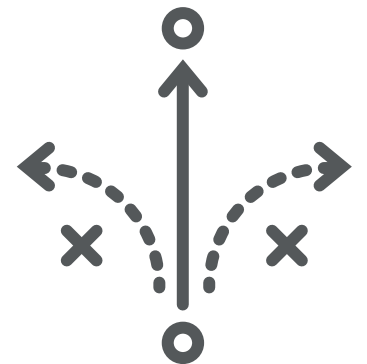
01 - Project Description

- Corridor Improvements

- Roadway Mill and overlay, signing and striping, sidewalk, drivepads, curb ramps, gravel landscaping.

- Pedestrian Access Improvements

- ADA/PROWAG compliant sidewalk, drivepads and curb ramps.
- Protected parking via bulbouts.
- Rapid flashing beacons at high volume pedestrian crossing.



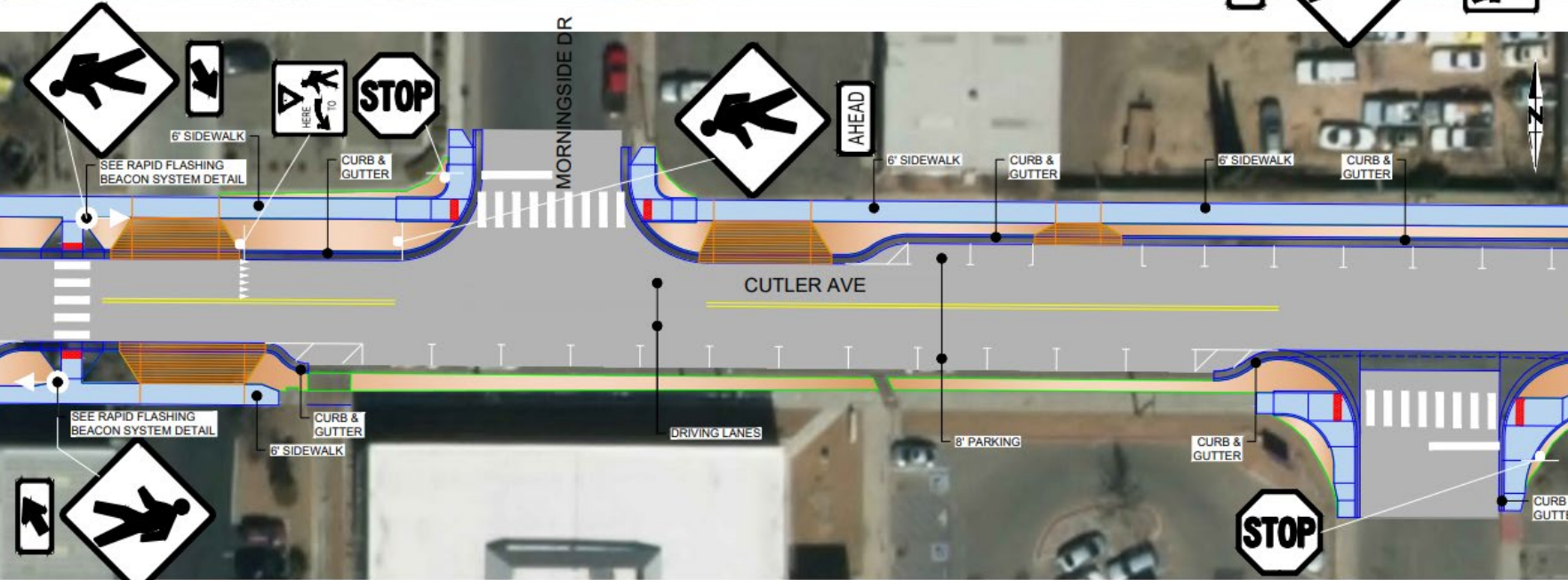
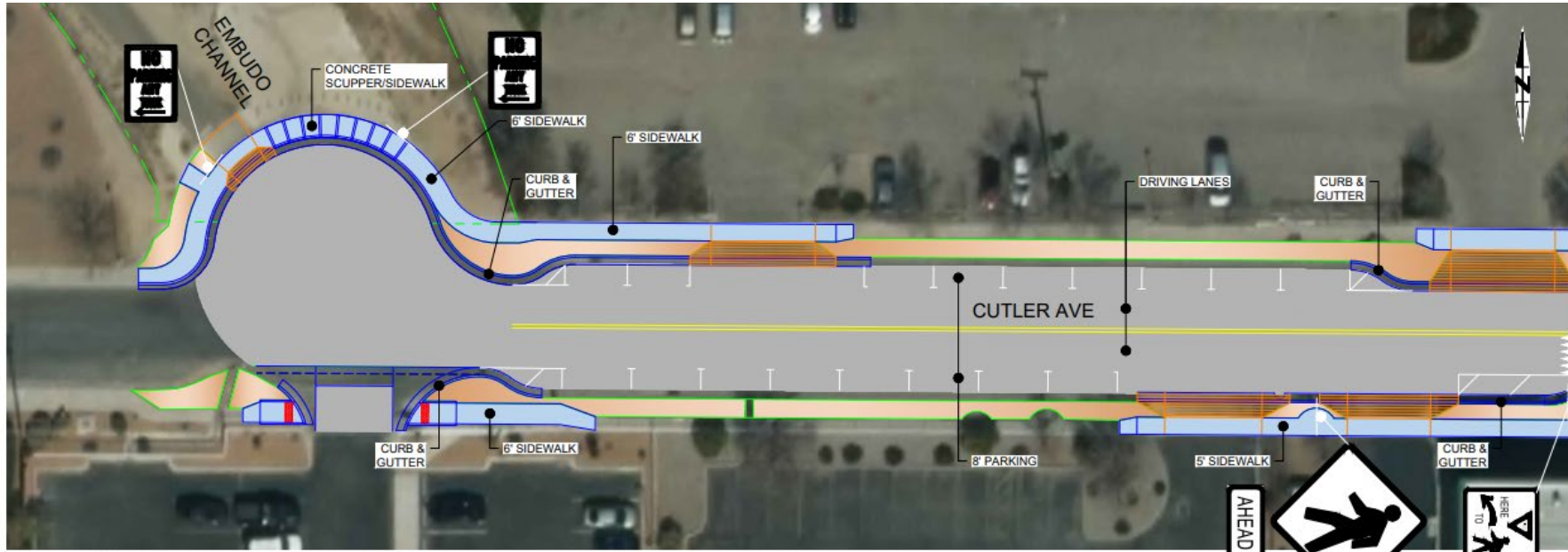
01 - Project Limits and Vicinity Map



Project limits: Cutler Avenue cul-de-sac to Washington Street

Project length = 0.30 miles

02 - Project Layout – Plan View, 1 of 2



RAPID FLASHING BEACON SYSTEM DETAIL



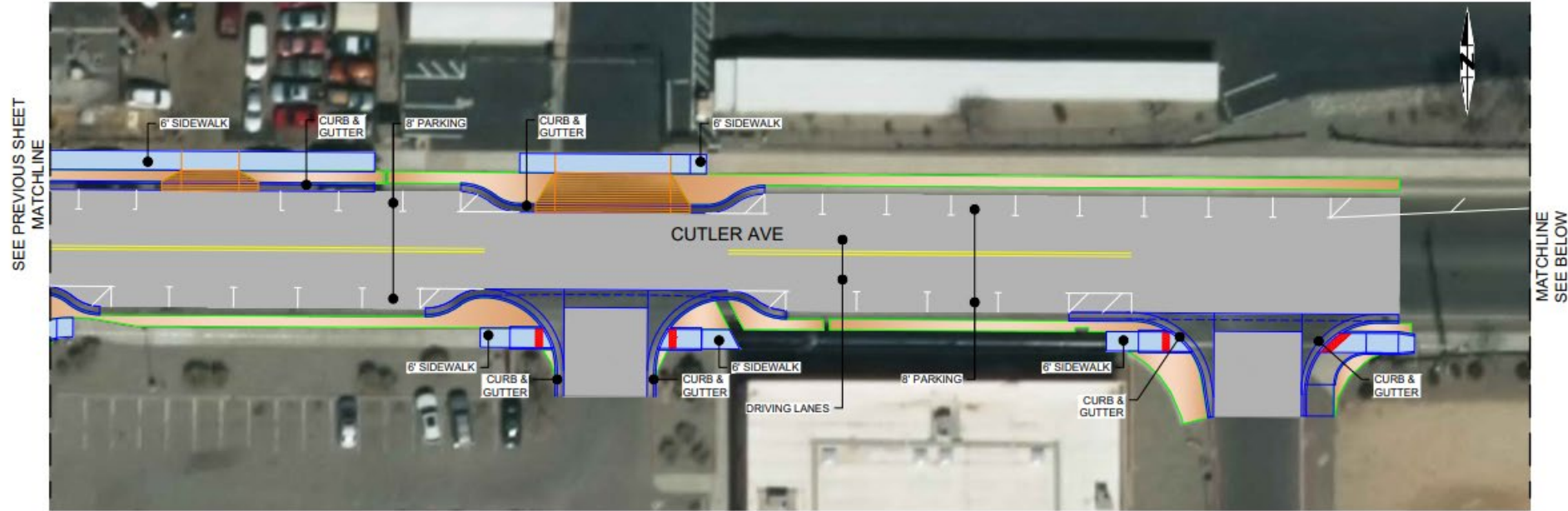
MATCHLINE
SEE BELOW

MATCHLINE
SEE NEXT SHEET

- LEGEND:**
- NEW CURB AND GUTTER, SIDEWALK
 - LANDSCAPE
 - DRIVEPADS
 - RIGHT OF WAY
 - LANE STRIPE
 - PARKING STRIPING
 - RAPID FLASHING BEACONS SYSTEM

SEE ABOVE
MATCHLINE

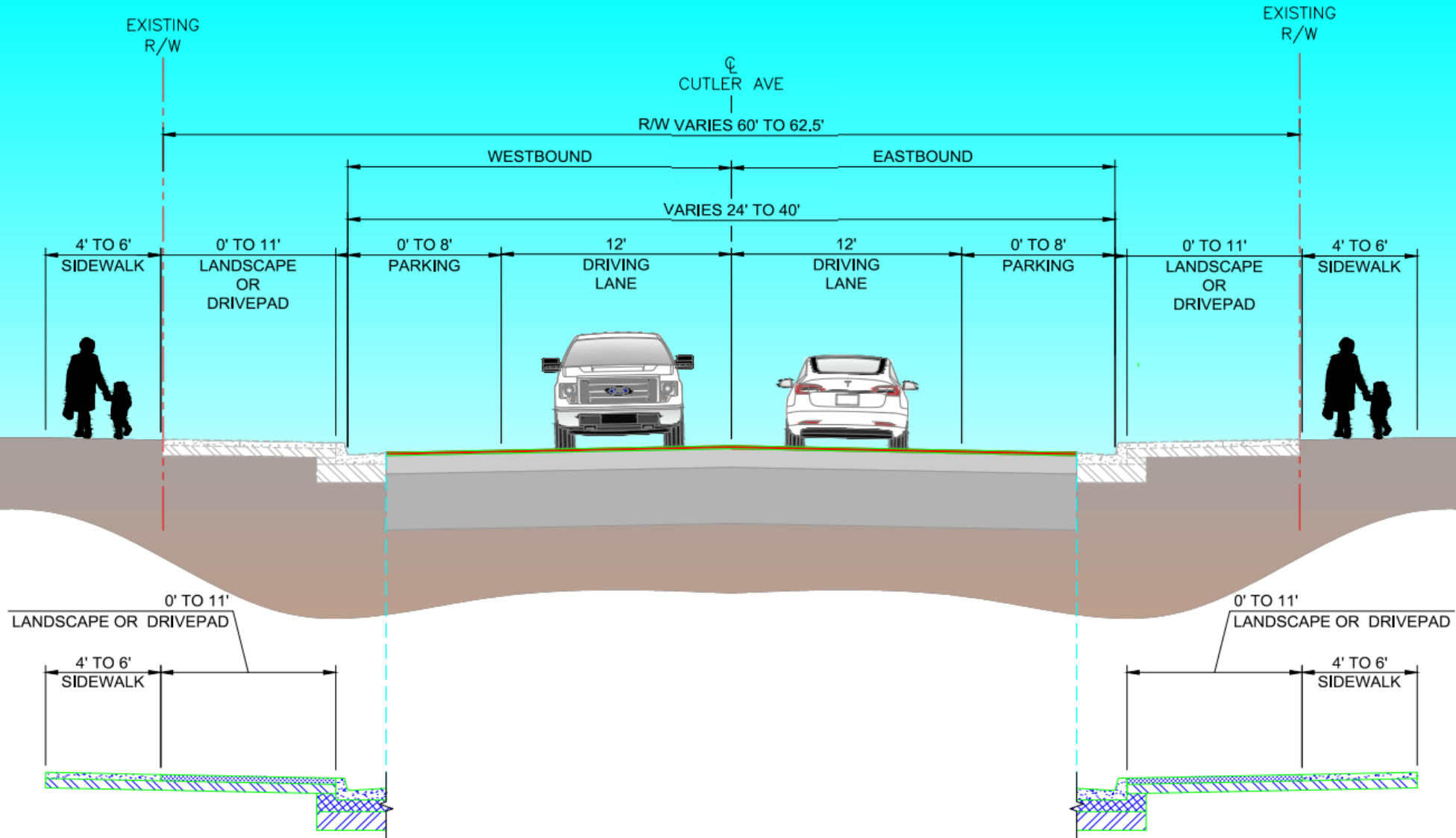
02 - Project Layout – Plan View, 2 of 2



LEGEND:

- NEW CURB AND GUTTER, SIDEWALK
- LANDSCAPE
- DRIVEPADS
- RIGHT OF WAY
- LANE STRIPE
- PARKING STRIPING
- RAPID FLASHING BEACONS SYSTEM

03 - Project Typical Section





04 - Questions/Comments

